

Roll-in Roll-in Compact Refrigerator 750 lt - 1 door Remote

ITEM # _____

MODEL # _____

NAME # _____

SIS # _____

AIA # _____


726652 (R1075RIFR)

 Roll-in Compact Refrigerator
 750 lt - 1 door, Remote- 230
 V/1N/50Hz

Short Form Specification

Item No. _____

External and internal in AISI 304 stainless steel. Insulation thickness mm60. Right hinged full door with lock. Bottom door gasket adjustable. Pre-arranged for remote refrigeration unit (non included); ventilated operating mode; digital control; evaporator; automatic defrost; external digital temperature display; high/low humidity switch. Operating temperature 0+10° C. For ambient temperatures up to 43 °C Gas in foam: Cyclopentane.

Main Features

- Excellent space optimisation thanks to the compact dimensions (footprint 0.56m²).
- One full door.
- The operating temperature can be adjusted from 0 to +10 °C to suit both meat and dairy storage requirements.
- Simple control panel: on/off switch, high/low humidity switch and digital temperature display.
- Automatic defrost and automatic evaporation of defrost water.
- Ventilated cooling for optimal temperature distribution.
- Inner side protectors to protect the internal walls.
- Suitable for all kinds of 18 shelves GN 1/1 trolleys, designed to fit the 18 shelves GN 2/1 trolley available as optional accessory.
- Adjustable bottom door gasket.
- Lift-up control panel to better access main components.
- Connectivity ready for real time access to connected appliances from remote and data monitoring (requires optional accessory).

Construction

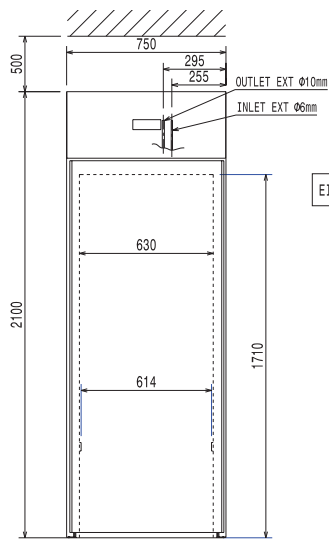
- Remote compressor to suit operating conditions.
- Interior cell and external panel are constructed in 304 AISI stainless steel.
- Bottom panel with rounded internal corners avoids dirt traps.
- Refrigerant type: R134a.
- Developed and produced in ISO 9001 and ISO 14001 certified factory.
- Cabinet fitted with up to 60 mm thickness of Cyclopentane insulation for best insulating performance (thermal conductivity: 0,020 W/m*K). CFC and HCFC-free insulation.

Optional Accessories

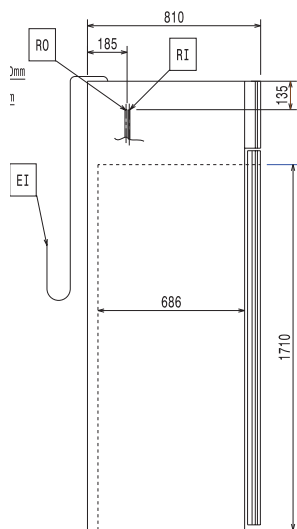
- Trolley 18x2/1GN for roll-in 750lt PNC 881521

APPROVAL: _____

Front

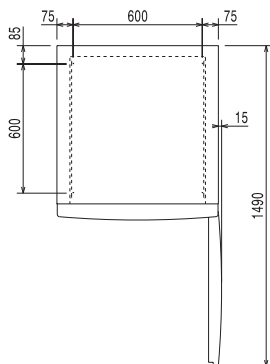


Side



EI = Electrical inlet (power)
 RI = Refrigerant Inlet
 RO = Refrigerant Outlet

Top



Electric

Supply voltage:

726652 (RI075R1FR)

230 V/1 ph/50 Hz

Key Information:

Door hinges:	Right Side
External dimensions, Width:	750 mm
External dimensions, Height:	2100 mm
Number and type of doors:	1 Full
External side panels:	304 AISI
External top panels:	Galvanized Steel
External door material:	304 AISI
Internal panels material:	304 AISI

Refrigeration Data

Control type:	Digital
Refrigeration type:	R134a;R513A;R426A
Suggested refrigeration power:	580 W
Condition at evaporation temperature:	-10 °C
Condition at condensation temperature:	55 °C
Condition at ambient temperature:	43 °C
Connection pipes (remote) - outlet:	10 mm
Connection pipes (remote) - inlet:	6 mm